

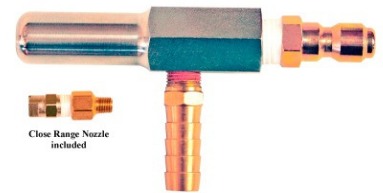
X-JET NOZZLE

Long Range External Chemical Injection

FEATURES

- Two versions to choose from.
 - Original X-Jet with fixed long and close range spray patterns
 - X-Jet M5 with Adjustable spray pattern from 5 to 60 degree spray pattern
- Apply soap & rinse with the same nozzle
- Projects chemicals up to 40ft or more depending on your machine
- NO chemicals run through the pump, hose, reels, gun, lance, or quick connects
- Color coded proportioners to apply chemicals at desired ratios

The Original X-Jet

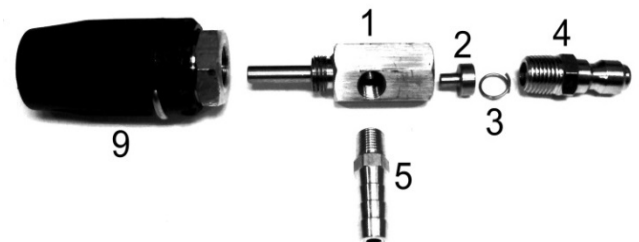
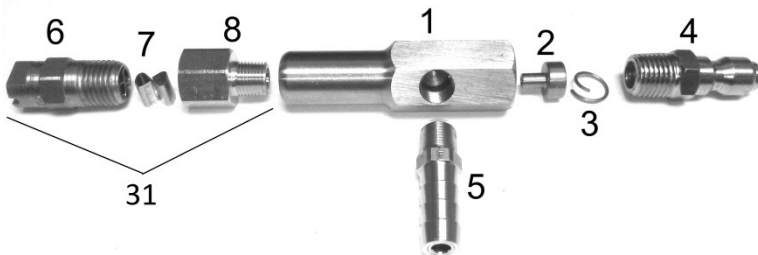


X-Jet M5



SPECIFICATIONS

Style	The Original X-Jet (Fixed)						X-Jet M5 (Adjustable)					
Model	XJET-07K	XJET-09K	XJET-13K	XJET-16K	XJET-20K	XJET-25K	XJETM5-07K	XJETM5-09K	XJETM5-13K	XJETM5-16K	XJETM5-20K	XJETM5-25K
Operating Pressure	2000-3000 PSI	2000-3000 PSI	2500-4000 PSI	2500-4000 PSI	2500-4000 PSI	2500-4000 PSI	2000-3000 PSI	2000-3000 PSI	2500-4000 PSI	2500-4000 PSI	2500-4000 PSI	2500-4000 PSI
GPM Flow	2 - 2.5 GPM	3 - 3.5 GPM	4 - 4.5 GPM	5 - 6.5 GPM	7 - 8 GPM	8.5+ GPM	2 - 2.5 GPM	3 - 3.5 GPM	4 - 4.5 GPM	5 - 6.5 GPM	7 - 8 GPM	8.5+ GPM
Max Temperature	190° F						190° F					
Port Sizes	Inlet 1/4" MPT x 1/4" QC Plug						Inlet 1/4" MPT x 1/4" QC Plug					
	Chemical Port 1/8" MPT x 3/8" Hose Barb						Chemical Port 1/8" MPT x 3/8" Hose Barb					
Kit Weight	2.6 lbs						2.8 lbs					



Item	Part	Description
1	N/A	X-Jet body-Not sold separately
*2	OR(X)	Orifice (X is selected size 7,9,13,16,20,25 (See model number in chart above)
3	XSPR	Spring
4	XMP	1/4" MPT x 1/4" Quick Connect Plug
5	XSHB	Chemical Hose Barb
6	XCRMN	Close Range Meg Nozzle
7	XCRNRV	Close Range Nozzle Vane
8	XCRNA	Close Range Nozzle Adapter
**9	XM5RVN	Variable Nozzle (See note below)
31	XCRNAS	Close Range Nozzle Assembly (Items 6-8)

*Special Order sizes available for machines larger than 8.5 GPM

**Replaceable; However, be advised variable nozzle is machined on to X-Jet body at factory for proper vertical fan orientation. With replacement by hand, orientation of spray pattern cannot be guaranteed.

Item	Part	Description	Item	Part	Description
10	XJH	3/8" Hose per ft	20	XPP-BLUE	Blue Proportioner
11	XSPDC	Clamps (2)	21	XPP-TAN(MED)	Tan Proportioner
12	XSOV	Shut Off Valve	22	XPP-GREEN	Green Proportioner
13	XBSHB	Hose Assembly Barb	23	XPP-ORANGE	Orange Proportioner
14	XBS	Ball Strainer Screen	24	XPP-BROWN	Brown Proportioner
15	XPP-GREY	Grey Proportioner	25	XPP-YELLOW	Yellow Proportioner
16	XPP-BLACK	Black Proportioner	26	XPP-AQUA	Aqua Proportioner
17	XPP-BEIGE	Beige Proportioner	27	XPP-PURPLE	Purple Proportioner
18	XPP-RED	Red Proportioner	28	XPP-PINK	Pink Proportioner
19	XPP-WHITE	White Proportioner	29	CLEAR	CLEAR NOT USED



Kit	XJET-XX	Original X-Jet Kit (Items 1-8, 30 & 32) XX is selected orifice size
Kit	XJETM5-XX	M5 X-Jet Kit (Items 1-5, 9, 30, & 32) XX is selected orifice size
30	XPP-PACK	Proportioner Pack (Items 15-29)
31	XCRNAS	Close Range Nozzle Assembly (Items 6-8)
32	XHA	Hose Assembly (Items 10-14)



INSTALLATION

Read the instructions & warnings included with your X-Jet Kit in its entirety before installation. Determine the X-Jet model you need based on the operating pressure and GPM of your machine. Connect the X-Jet to the gun or lance via a 1/4" quick connect coupler (not included). Make sure it is properly connected before turning the pressure on. Always aim the nozzle away from all surfaces and people when first turning the pressure on to ensure the X-Jet is securely connected. Never aim the nozzle towards any person or animal in any circumstance. Always use the proper personal protective equipment when using the X-Jet Nozzle. Under no circumstances should the pressure of the pressure washer in use exceed the maximum rated pressure of any component.

TROUBLESHOOTING

Problem	Cause	Solution
X-Jet will not draw chemical	Shut off valve in hose has failed Shut off valve is closed Incorrect orifice size Crack in chemical hose Debris is in barb or hose Pressure Washer is not working properly	Replace shut off valve Twist valve to open position Replace orifice with correct orifice size Replace chemical hose Clean debris out of hose or barb Verify proper operating pressure & GPM
Water is shooting out hose barb	Missing or Incorrect orifice size Debris is in orifice	Install or replace with correct size Clean debris out of orifice
Water stream is too misty	Incorrect orifice size Pressure Washer is not working properly	Replace orifice with correct orifice size Verify proper operating pressure & GPM
Water stream does not shoot far	Close range nozzle is attached to original X-Jet Incorrect Orifice Size Adjustable M5 nozzle is in closed position Pressure Washer is not working properly	Remove close range nozzle Replace orifice with correct orifice size Twist the adjustable nozzle to open Verify proper operating pressure & GPM
Questions ? X-Jet Technologies, Inc. 1-800-983-7467		



Thank you for your purchase of the **X-JET NOZZLE**. You have purchased a revolutionary tool for your pressure washer. Please read the following instructions before operating. If you have any questions after reading these instructions, please call your authorized distributor or X-Jet Technologies, Inc. at 1-800-983-7467

SAFETY ALWAYS COMES FIRST

****WARNING**** when using this nozzle always exercise basic safety precautions, including the following:

- Use this tool only for its intended purpose.
- The **X-JET NOZZLE** must be properly installed in accordance with the installation instructions provided.
- This is a high-pressure spraying system nozzle. Water under high pressure and chemicals under high pressure can cause severe injury if not properly used. To prevent injury, do not point the nozzle at any part of your body or at any other person when in operation. Keep all persons away from the pressure washing machine and the spray area of the nozzle.
- The nozzle is to be used with a quick connect coupler attached to your pressure washing gun or wand. Make sure the nozzle is securely fastened to the quick connect before operation.
- Wear eye protection whenever using this tool.
- Only operate from ground level. **DO NOT** operate while standing on a ladder or other elevated surface.
- Follow all chemical instructions and safety precautions with use of the X-Jet Nozzle.
- Do not disconnect the X-Jet Nozzle while pressure washer is in operation.
- Hand tighten the close-range nozzle on the original X-JET NOZZLE to ensure a tight fit. Check frequently to prevent the close-range Nozzle from becoming a flying hazard. *(Close Range Nozzle is for use with the Original X-Jet Nozzle only)
- Periodic maintenance to clear any debris inside the nozzle is recommended. If water should stop flowing from the nozzle, turn unit off immediately. Make sure all pressure is released from the pressure washing hose and gun before you disconnect the X-JET NOZZLE.
- Rinse the X-Jet and hose assembly with water for longer lasting parts.
- Keep the X-Jet nozzle away from other tools when not in use to avoid damage to moving parts.
- Always use genuine X-JET parts for replacement.

CLOSE RANGE CLEANING

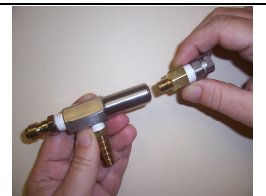
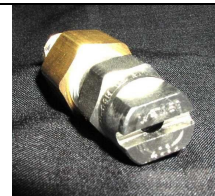
The close range nozzle is included in the Original X-Jet Kit Only. Attaching the **CLOSE RANGE NOZZLE** to the end of the long range Original X-JET NOZZLE enables you to shorten the spray pattern so you can wash objects up close, such as decks, fences, foundation, etc, while still controlling the chemical to water ratio.

CLOSE RANGE INSTRUCTIONS

ORIGINAL X-JET: Hand tighten the Close Range Nozzle onto the long Range Original X-Jet Nozzle.

This is only used for washing surfaces at a close range

(Note: periodically check that the close range nozzle is tight to ensure it will not come off causing any damage.)



X-JET M5: For close range cleaning, simply twist the nozzle until the desired spray pattern for your application is reached.

(The Close Range Nozzle Assembly is NOT for use with the M5 Nozzle)





INSTALLATION

****A 1/4 inch female quick connect coupler is required on your spray gun or lance for installation****

***Verify all parts are included in your X-JET NOZZLE kit:**

1. Original or M5 X-Jet Nozzle Body
2. 15 ft Hose Assembly with chemical ball valve and filter screen/barb assembly.
3. Pack of 14 Colored Proportioners & Proportioner Chart reference card.

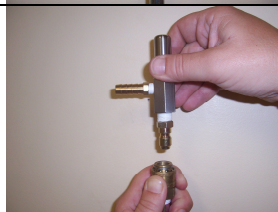
Step 1

Install a 1/4 inch quick connect coupler at the end of your pressure washing lance if one is not present. (Quick connects not included in kits)



Step 2

Insert the X-JET NOZZLE into the 1/4 inch quick connect coupler at the end of your lance.



Step 3

Push the open end of the X-Jet hose assembly onto the brass hose barb on the underside of the X-JET NOZZLE.



Step 4

Place the ball strainer into your container of cleaning solution. Take note that shut off valve on the hose assembly should be in the OFF position before you begin using the tool.



Step 5

With the pressure washer on, you can now apply the cleaning solution by turning the shut off valve to the on position. (Refer to the last page Titled RECIPE FOR WASHING A HOUSE as a guide in your first trial run in making up your cleaning solution for washing)



Metering Proportioners: Included in your kit are 14 colored proportioners. These proportioners are used to meter cleaning solutions at the proper water to chemical ratio per the chart below.

INSTRUCTIONS: Determine the ratio of water to chemical that you need per your cleaning solutions instructions. Based on the Gallon per Minute of your machine see the chart below to determine which color is needed to achieve that ratio. Insert the colored proportioner into the end of the brass hose barb. Attach the X-Jet hose assembly per installation instructions above.



X-JET PROPORTIONER CHART (WATER TO CHEMICAL MIXTURE)

<u>COLOR</u>	<u>2 GPM</u>	<u>3 GPM</u>	<u>4 GPM</u>	<u>5 GPM</u>	<u>6 GPM</u>	<u>8 GPM</u>
OPEN	.8-1	1.2-1	1.6-1	2-1	2.4-1	3-1
GREY	1.4-1	2-1	2.5-1	3-1	4-1	4.9-1
BLACK	3-1	4-1	5-1	6.5-1	8-1	11-1
BEIGE****	6-1	8-1	10-1	13-1	16-1	20-1
RED****	9-1	12-1	16-1	20-1	24-1	28-1
WHITE	16-1	22-1	30-1	38-1	45-1	51-1
BLUE	20-1	27-1	37-1	46-1	55-1	61-1
TAN(MED)	28-1	38-1	50-1	64-1	77-1	85-1
GREEN	31-1	42-1	57-1	70-1	85-1	90-1
ORANGE	35-1	48-1	64-1	80-1	96-1	102-1
BROWN	48-1	66-1	88-1	110-1	133-1	145-1
YELLOW	70-1	96-1	128-1	158-1	191-1	215-1
AQUA	94-1	128-1	170-1	215-1	257-1	284-1
PURPLE	146-1	200-1	240-1	300-1	400-1	501-1
PINK	280-1	383-1	500-1	480-1	766-1	906-1

******Typically used when applying undiluted Bleach (12.5% Sodium Hypochlorite) House Wash**
NOTE: THESE ARE APPROXIMATE RATIOS. RATIOS CAN VARY DEPENDING ON THE MANUFACTURE OF THE PRESSURE WASHER AND ALSO AT DIFFERENT SEA LEVELS. IF PRECISE MEASURING IS REQUIRED, PLEASE TEST THE EQUIPMENT TO FIND THE BEST RATIO BEST SUITED FOR YOUR APPLICATION.

RECIPE FOR WASHING A HOUSE

IF YOU ARE UNCERTAIN ABOUT THE PROPORTIONERS, WE RECOMMEND USING THE FOLLOWING RECIPE UNTIL YOU BECOME FAMILIAR WITH THE RATIOS NEEDED.

1. POUR TWO GALLONS OF HOUSEHOLD BLEACH OR 1/2 GALLON OF 12.5% SODIUM HYPOCHLORITE HOUSE WASH INTO A 5 GALLON PAIL. ADD 1/4 CUP OF DISH DETERGENT SOAP SUCH AS DAWN (SOAP ONLY. AVOID DETERGENTS WITH OTHER INGREDIENTS FOR SAFETY). FILL THE CONTAINER WITH WATER. THIS IS YOUR WASHING RECIPE. PLEASE NOTE THAT YOU MUST USE WHAT YOU MIX THE SAME DAY, AS HOUSEHOLD SOAPS INCREASE THE DECOMPOSITION OF THE BLEACH RAPIDLY. INDUSTRIAL SURFACTANTS ARE RECOMMENDED AS THEY ARE BLEACH STABLE & LEFT OVER CLEANING SOLUTION CAN BE USED AGAIN FOR THE NEXT JOB. CALL YOUR LOCAL DISTRIBUTOR FOR THESE INDUSTRIAL SURFACTANTS.
2. ALTHOUGH THE PROPORTIONERS WILL SAVE TIME AND TRIPS TO REFILL YOUR SOLUTION, YOU DO NOT HAVE TO USE THE PROPORTIONERS ENCLOSED WITH THE X-JET. THE X-JET NOZZLE WITHOUT A PROPORTINER WORKS GREAT FOR THIS RECIPE.
3. USE YOUR X-JET NOZZLE IN THE RINSE MODE TO WET DOWN ALL SHRUBS, FLOWERS, AND OTHER SURROUNDING SURFACES AND VEGETATION. THE CLOSE RANGE NOZZLE (INCLUDED WITH THE ORIGINAL XJET WORKS GREAT FOR THIS PURPOSE OR THE X-JET M5 TWISTED TO THE WIDEST PATTERN. *(Cover any plants or items that may be extremely sensitive to overspray)*
4. PLACE THE END OF THE HOSE WITH THE FILTER SCREEN DOWN INTO THE CONTAINER YOU ARE USING FOR THE RECIPE, OR REMOVE THE SCREEN/BARB ASSEMBLY FROM THE END OF THE HOSE & ATTATCH THE HOSE TO THE X-JET PAIL SYSTEM ACCESSORY (SOLD SEPARATELY).
5. STAND BACK APPROXIMATELY 12 FEET FROM THE STRUCTURE YOU ARE CLEANING. TURN THE CHEMICAL VALVE TO THE OPEN POSITION; BEGIN SPRAYING FROM THE BOTTOM UP ON THE SURFACE.
6. LET THE RECIPE STAY ON APPROXIMATELY 2 MINUTES THEN TURN THE CHEMICAL VALVE TO THE OFF POSITION & BEGIN RINSING FROM THE TOP DOWN, PAYING SPECIAL ATTENTION TO RINSE THE WINDOWS WELL TO AVOID STREAKING.
7. WASH & RINSE SMALL SECTIONS OF THE HOUSE AT A TIME TO ELIMINATE RECIPE DRYING ON ANY SURFACES WHICH CAN CAUSE STREAKING.

THIS IS ONLY A RECOMMENDED RECIPE. CONDITIONS FOR CLEANING MAY DIFFER FOR EACH JOB. X-JET TECHNOLOGIES ASSUMES NO LIABILITY IN CLEANING OR CHEMICAL APPLICATIONS WITH OR WITHOUT USING THE X-JET NOZZLE AS USE & CONDITIONS ARE BEYOND OUR CONTROL.

WHEN YOU BECOME FAMILIAR WITH THE USE OF YOUR X-JET, YOU CAN USE THE PROPORTIONERS TO MIX YOUR CLEANING SOLUTION FOR YOU BY USING THE CORRECT COLOR CHOSEN FROM THE CHART & PLACE THE HOSE IN STRAIGHT CONCENTRATED CLEANING SOLUTION, RATHER THAN PRE-MIXING WITH WATER LIKE IN THE RECIPE ABOVE.

QUESTIONS? CONTACT YOUR LOCAL DISTRIBUTOR OR CALL 1-800-983-7467

