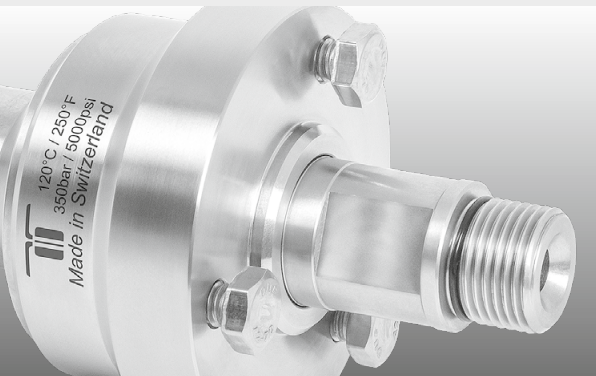


- ✓ Complete stainless steel construction
- ✓ Seal failure warning, through weep holes
- ✓ Sealed stainless steel bearings
- ✓ Carbide seal system

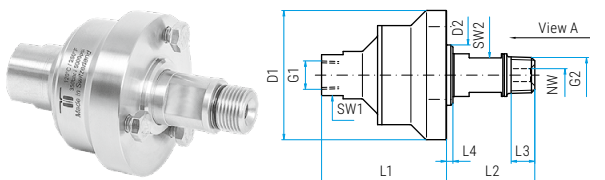
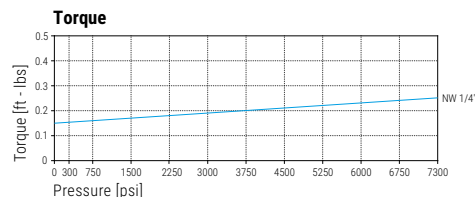
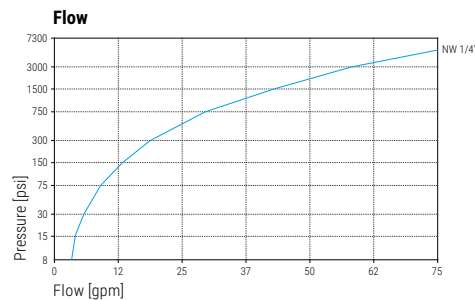
Application

High flow, high pressure, self rotating applications, surface cleaners, parts washers



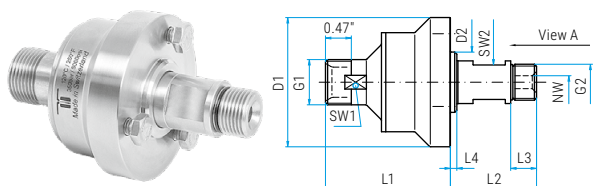
TECHNICAL DATA

Pressure	DYCI: 5000 psi (35 MPa) DYDI: 7300 psi (50 MPa)
Temperature	250°F
RPM	max. 2'000 rpm
Body	stainless steel
Inner part	stainless steel
Seal	carbide
Bearing	2x radial ball bearings 1x thrust ball bearing
Throughput medium	pH 3 - 12 filtered 10 microns compressed air (290 psi)



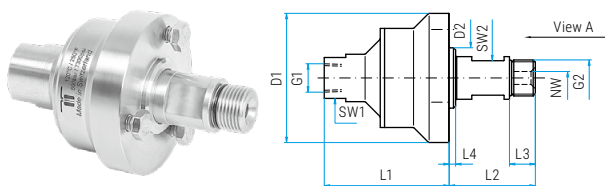
DYCI

Part No.	G1 (F)	G2 (M)	NW	SW1	SW2	L1	L2	L3	L4	D1	D2	Weight
55.051	1/4" NPTF	1/4" NPTM	1/4"	0.87	0.63	2.28	1.46	0.39	0.12	2.36	1.10	23.0 oz
55.063	1/4" NPTF	G3/8" M	1/4"	0.87	0.63	2.28	1.46	0.47	0.12	2.36	1.10	23.0 oz
55.153	3/8" NPTF	3/8" NPTM	1/4"	0.87	0.63	2.28	1.46	0.43	0.12	2.36	1.10	23.0 oz
55.163	3/8" NPTF	G3/8" M	1/4"	0.87	0.63	2.28	1.46	0.47	0.12	2.36	1.10	23.0 oz



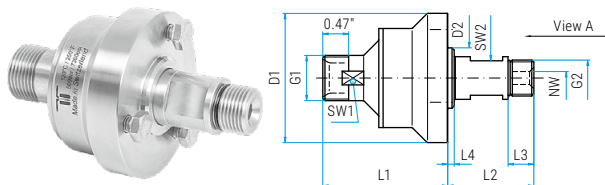
DYCI

Part No.	G1 (QV)	G2 (M)	NW	SW1	SW2	L1	L2	L3	L4	D1	D2	Weight
55.203	M21x1.5 M	G3/8" M	1/4"	0.75	0.63	2.28	1.46	0.47	0.12	2.36	1.10	23.0 oz
55.253	M22x1.5 M	G3/8" M	1/4"	0.79	0.63	2.28	1.46	0.47	0.12	2.36	1.10	23.0 oz



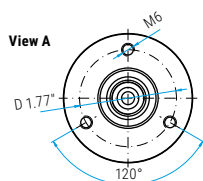
DYDI (7300 psi)

Part No.	G1 (F)	G2 (M)	NW	SW1	SW2	L1	L2	L3	L4	D1	D2	Weight
55.168	3/8" NPTF	G3/8" M	1/4"	0.87	0.63	2.28	1.46	0.47	0.12	2.36	1.10	23.0 oz



DYDI (7300 psi)

Part No.	G1 (QV)	G2 (M)	NW	SW1	SW2	L1	L2	L3	L4	D1	D2	Weight
55.263	M22x1.5 M	G3/8" M	1/4"	0.79	0.63	2.28	1.46	0.47	0.12	2.36	1.10	23.0 oz



36.905	DYCI Seal kit
36.906	DYCI Seal kit + adhesive
36.909	DYDI Seal kit (7300 psi)

Legend

M.. = metric thrust, ..M = male, F = female, G = gas pipe thrust, R = gas pipe thrust conical, QV = quick connects
SV = profile ring fitting, D = diameter, L = length, NW = nominal width, SW = wrench size