

G15 Specifications



Port Dimensions (16.6 GPM Max.)

Intake & discharge connection:

Aluminum (ADC-12)	1/2" Female NPT
Pure Polypropylene (PP)	1/2" Female NPT
Stainless Steel (316)	1/2" Female NPT
Kynar®	1/2" Female NPT
Air inlet (incl. ball valve):	1/4" Female NPT
Air exhaust (incl. silencer):	3/8" Female NPT

Maximum Liquid Temperature*

Diaphragm Material	Temperature
Buna N	158°F (70°C)
Santoprene® (TPO)	212°F (100°C)
PTFE	212°F (100°C)
Hytrel® (TPEE)	248°F (120°C)

*The maximum liquid temperature for metal pumps is determined by the elastomer (diaphragm material). Pure Polypropylene pumps have a maximum liquid temperature of 180°F (82°C) regardless of diaphragm material.

Air Supply Pressure (All Models)

20 – 100 PSI (1.4 – 7 kgf/cm²)

Discharge Volume Per Cycle

All diaphragms: 0.040 - 0.050 gallons

Maximum Cycles Per Minute

All diaphragms: 373

Maximum Size Solid

1/32" (1 mm)

Maximum Dry Suction Lift

Rubber fitted pump capability: 13.5'

PTFE fitted pump capability: 11'

Air Motor

Aluminum - standard on metal pumps.

Polypropylene - standard on plastic pumps.

Valve Type

Ball

Notes: Santoprene® fitted pumps include EPDM wetted o-rings.

Buna N is not available with Kynar® pumps.

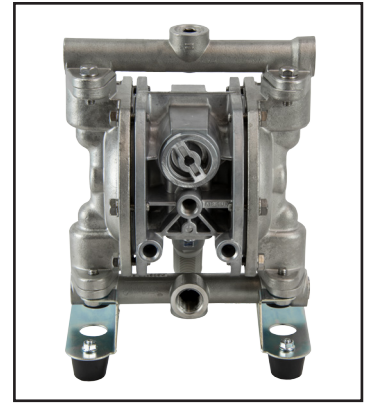


Aluminum (NPT)

Dimensions: 7.64"W x 10.43"H

Net Wt.: 11.9 lbs. (5.4 kg)

Shipping Wt.: 15 lbs.

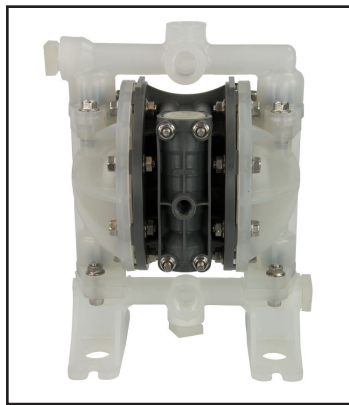


Stainless Steel (NPT)

Dimensions: 7.64"W x 10.43"H

Net Wt.: 18.1 lbs. (5.4 kg)

Shipping Wt.: 22 lbs.

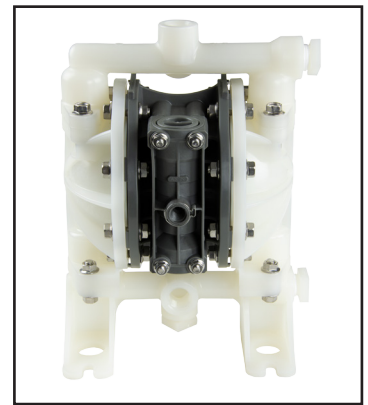


Pure Polypropylene (NPT)

NPT Dimensions: 8.58"W x 11.25"H

Net Wt.: 5.74 lbs. (2.6 kg)

Shipping Wt.: 9 lbs.



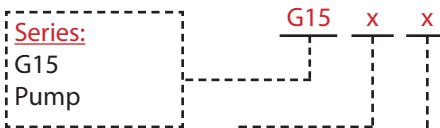
Kynar® (NPT)

NPT Dimensions: 8.58"W x 11.25"H

Net Wt.: 7.72 lbs. (3.5 kg)

Shipping Wt.: 12 lbs.

Model Number Nomenclature



Body Material:
 A = Aluminum
 V = Kynar®
 P = Pure Polypropylene
 S = Stainless Steel

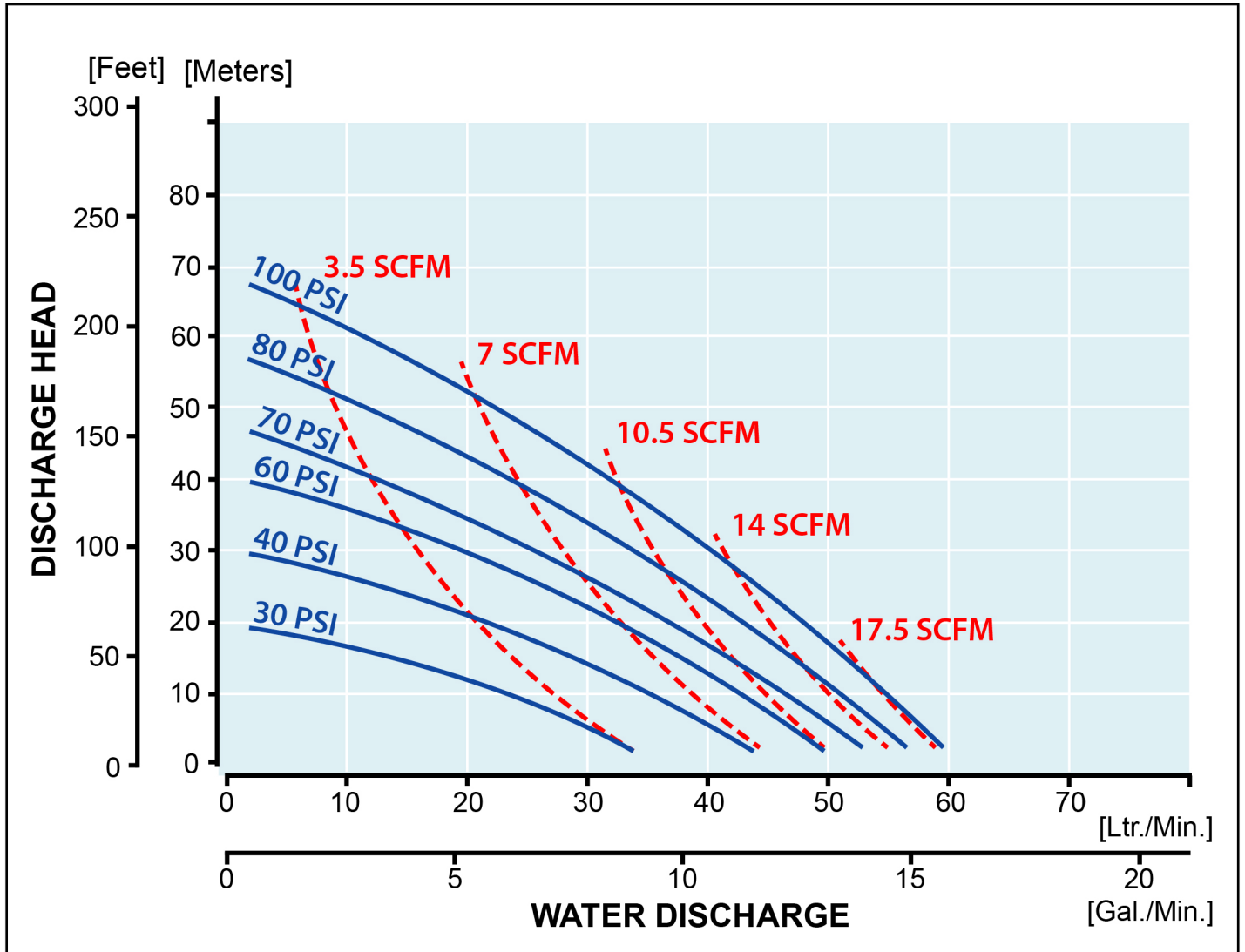
Diaphragm Material:
 H = Hytrel® (TPEE)
 N = Buna N (NBR)
 S = Santoprene® (TPO)
 T = PTFE

G15 Global Series Models

G15AH	G15SH	G15PH	G15VH
G15AN	G15SN	G15PN	G15VS
G15AS	G15SS	G15PS	G15VT
G15AT	G15ST	G15PT	

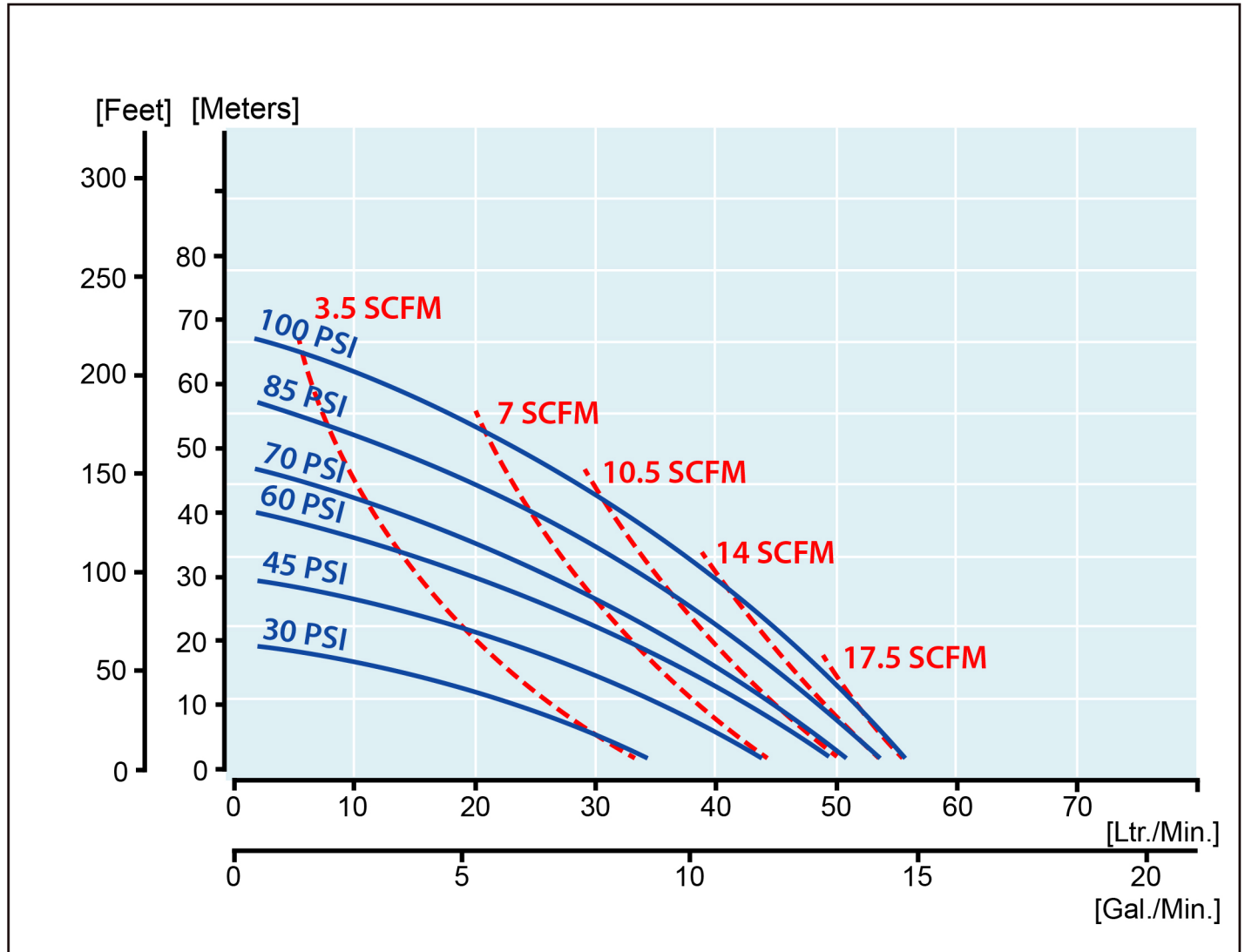
G15AN Performance Curve

G15 Buna N Rubber Diaphragm Performance Curve (Aluminum)



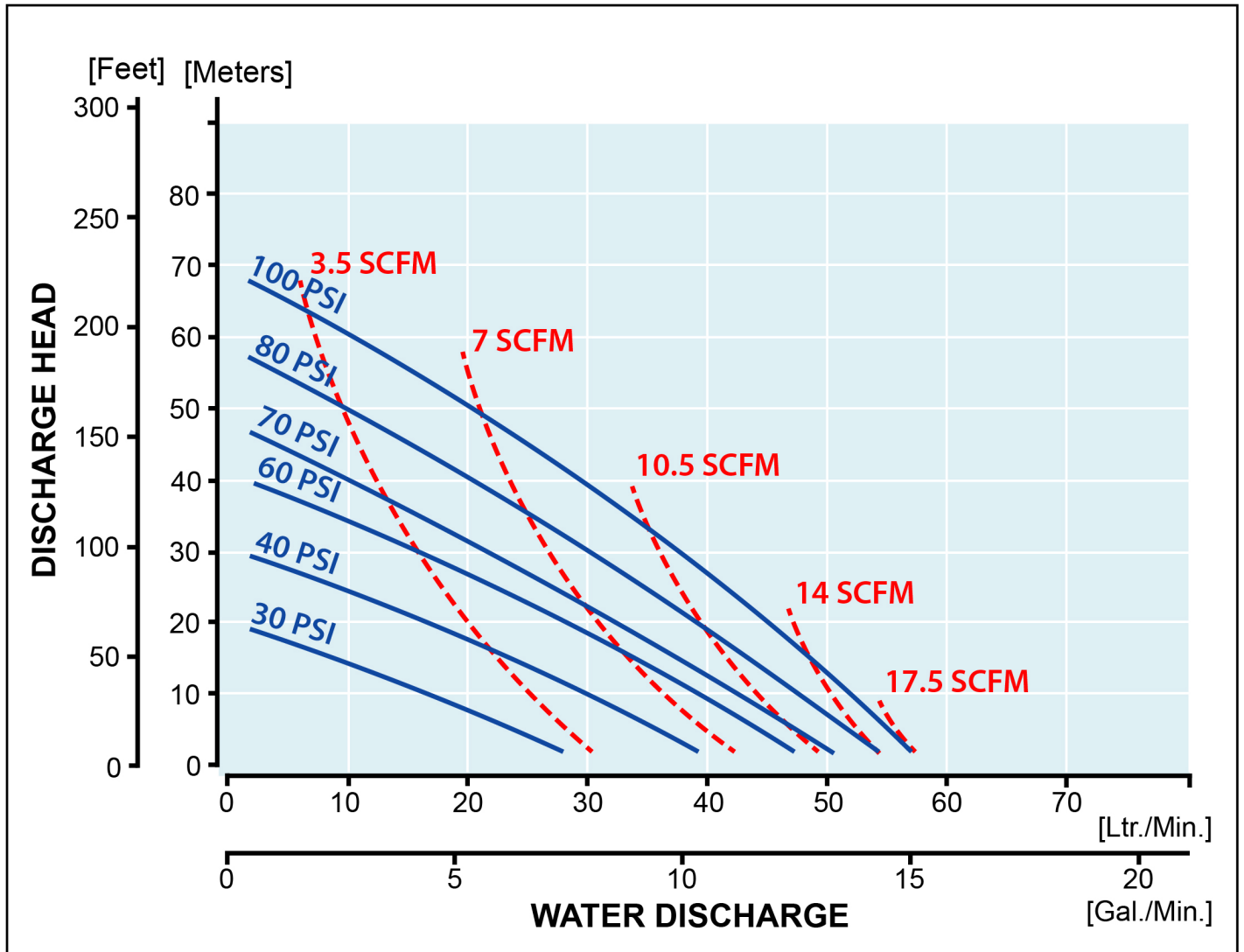
G15AH, G15AS Performance Curve

G15 Hytrel® & Santoprene® Diaphragm Performance Curve (Aluminum)



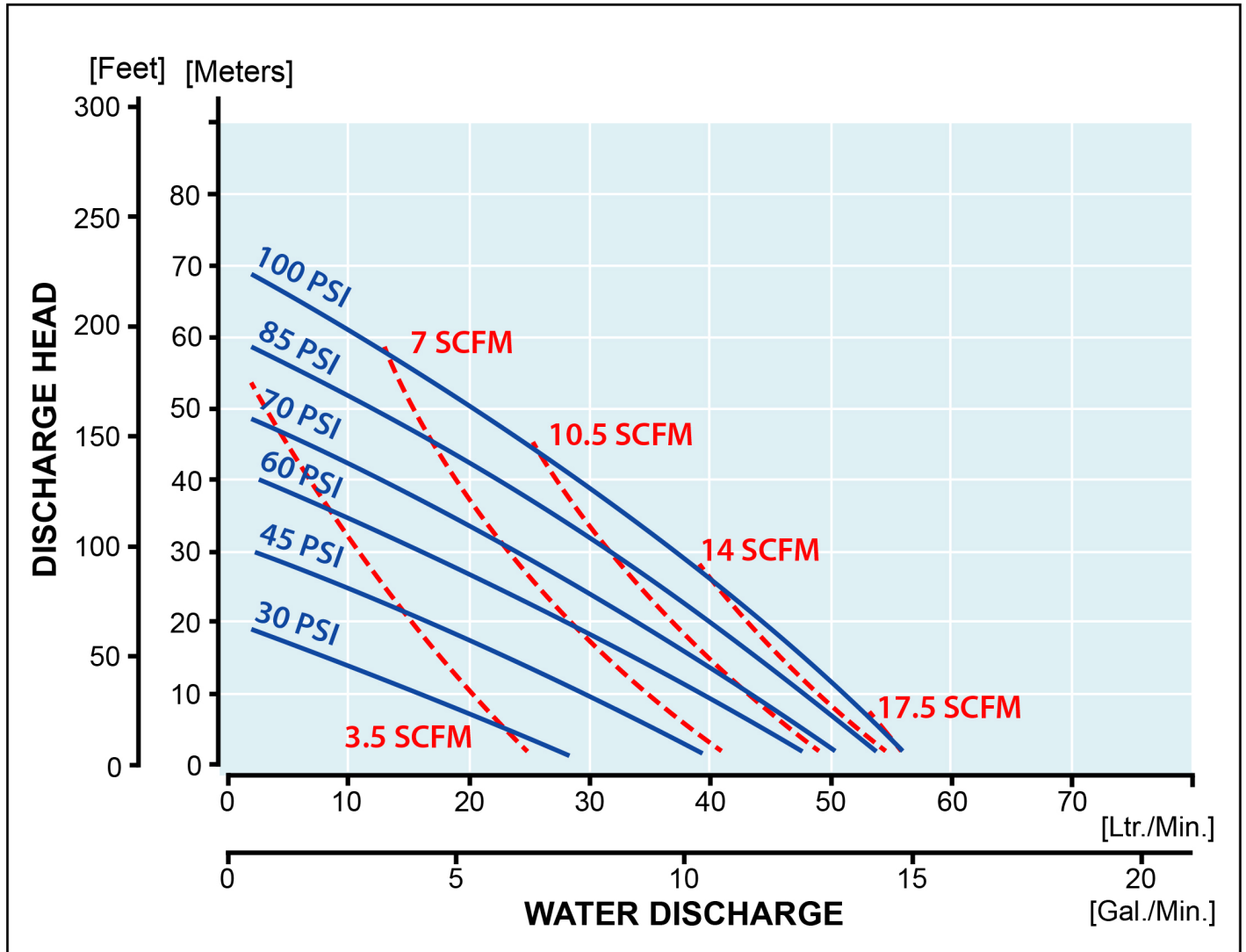
G15AT Performance Curve

G15 PTFE Diaphragm Performance Curve (Aluminum)



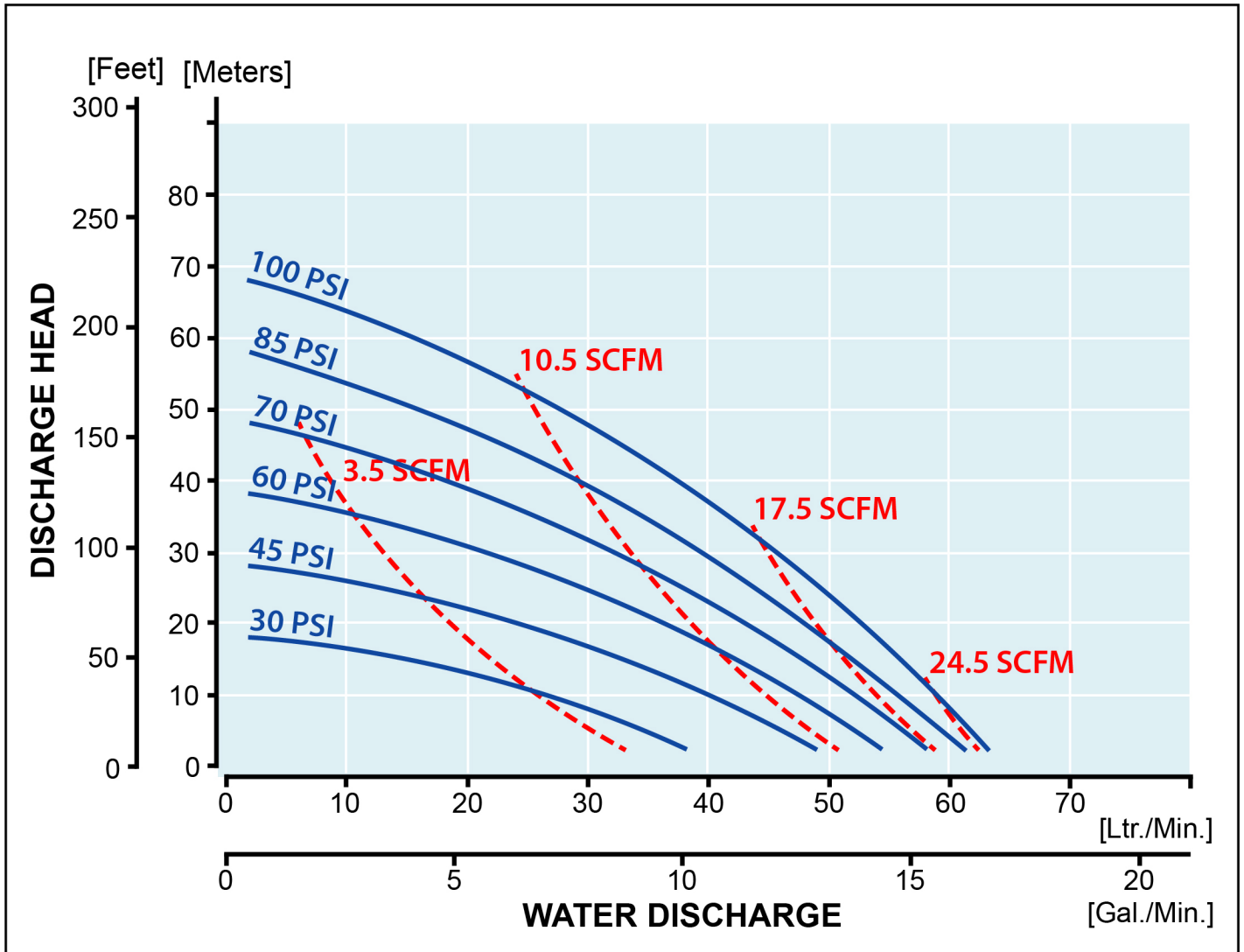
G15S Performance Curve (all)

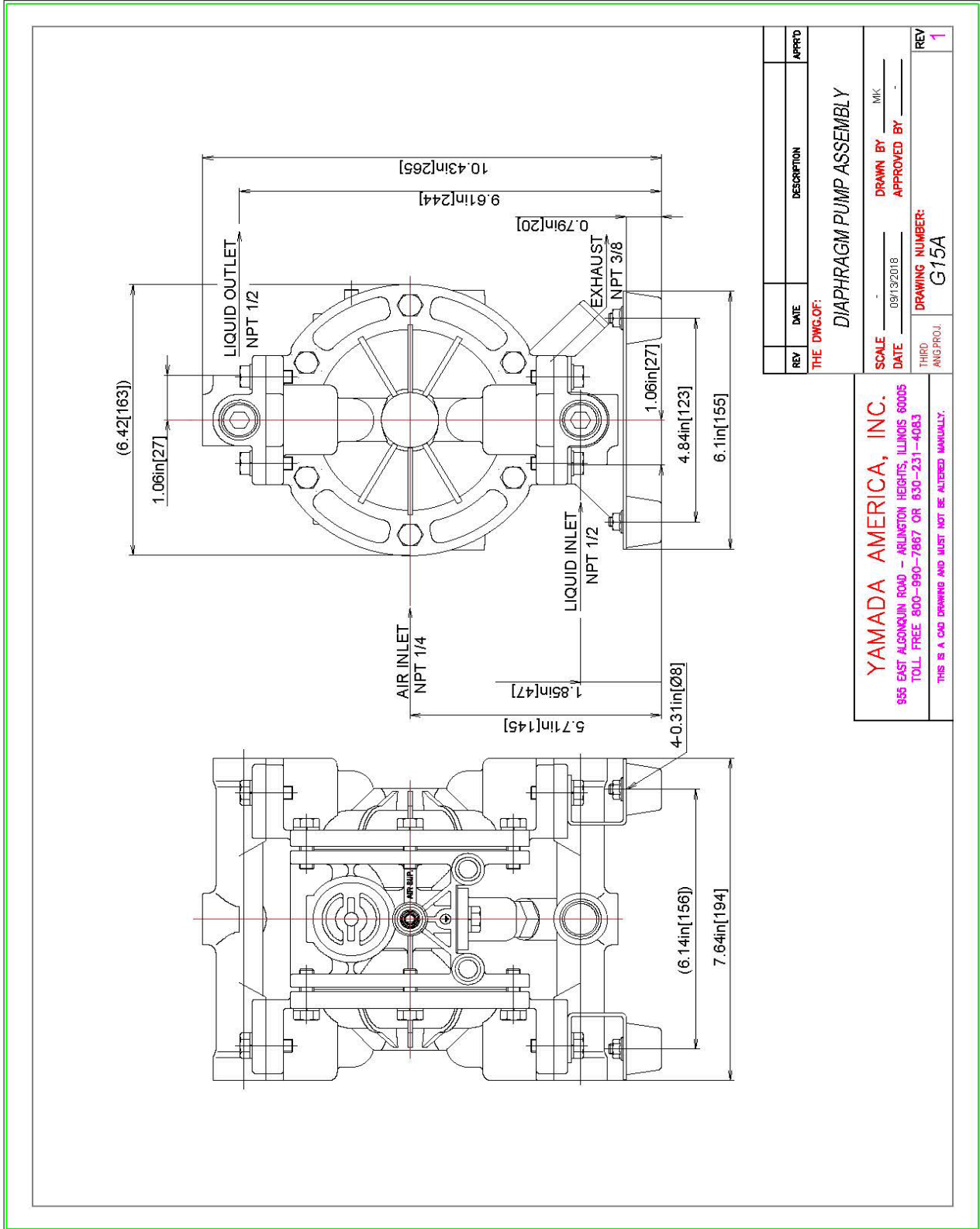
G15 Rubber & PTFE Diaphragm Performance Curve (Stainless Steel)



G15 Plastic Performance Curve (all)

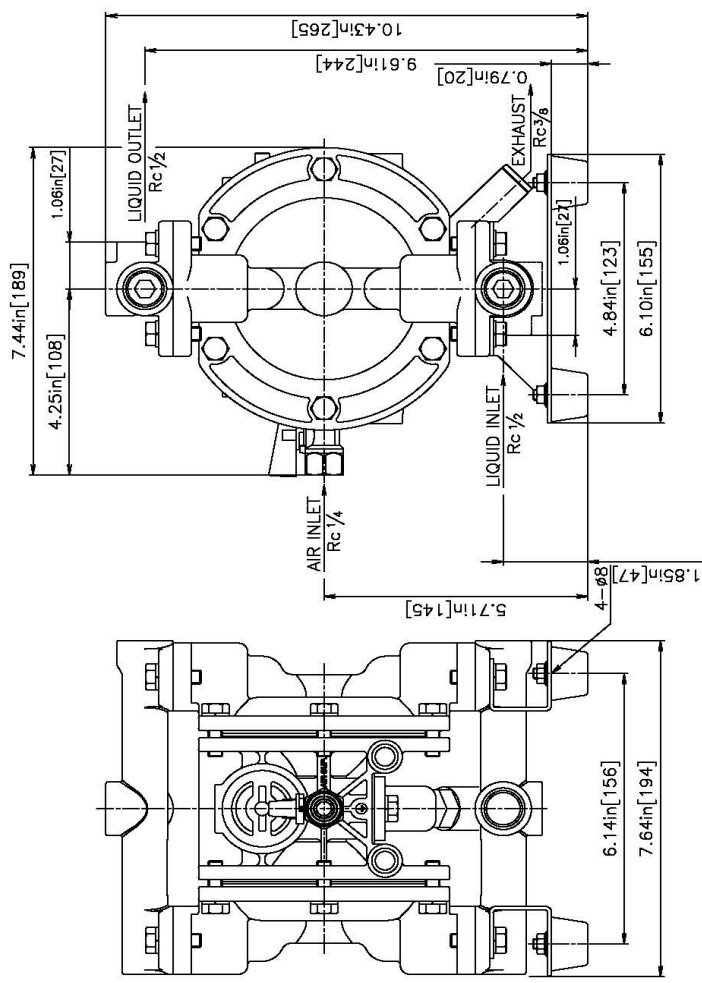
G15 Rubber & PTFE Diaphragm Performance Curve (Polypropylene & Kynar®)





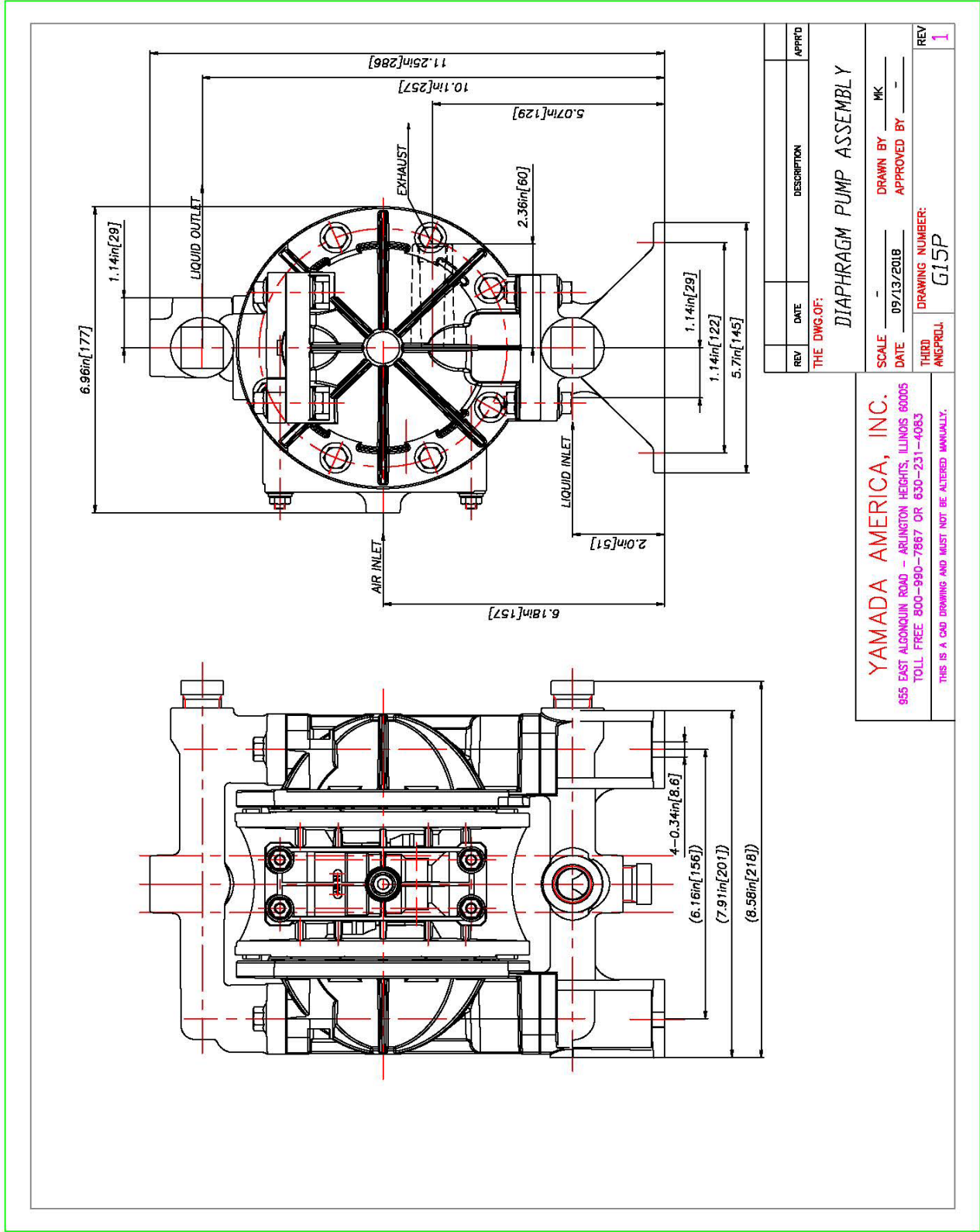
REV	DATE	DESCRIPTION	APPRD
THE DWG. OF: DIAPHRAGM PUMP ASSEMBLY			
SCALE		DRAWN BY	MK
DATE		09/13/2018	APPROVED BY
THIRD ANGLE PROJ.		DRAWING NUMBER: G15A	
			REV 1

YAMADA AMERICA, INC.
 955 EAST ALGONQUIN ROAD - ARLINGTON HEIGHTS, ILLINOIS 60005
 TOLL FREE 800-990-7867 OR 830-231-4083
 THIS IS A CAD DRAWING AND MUST NOT BE ALTERED MANUALLY.



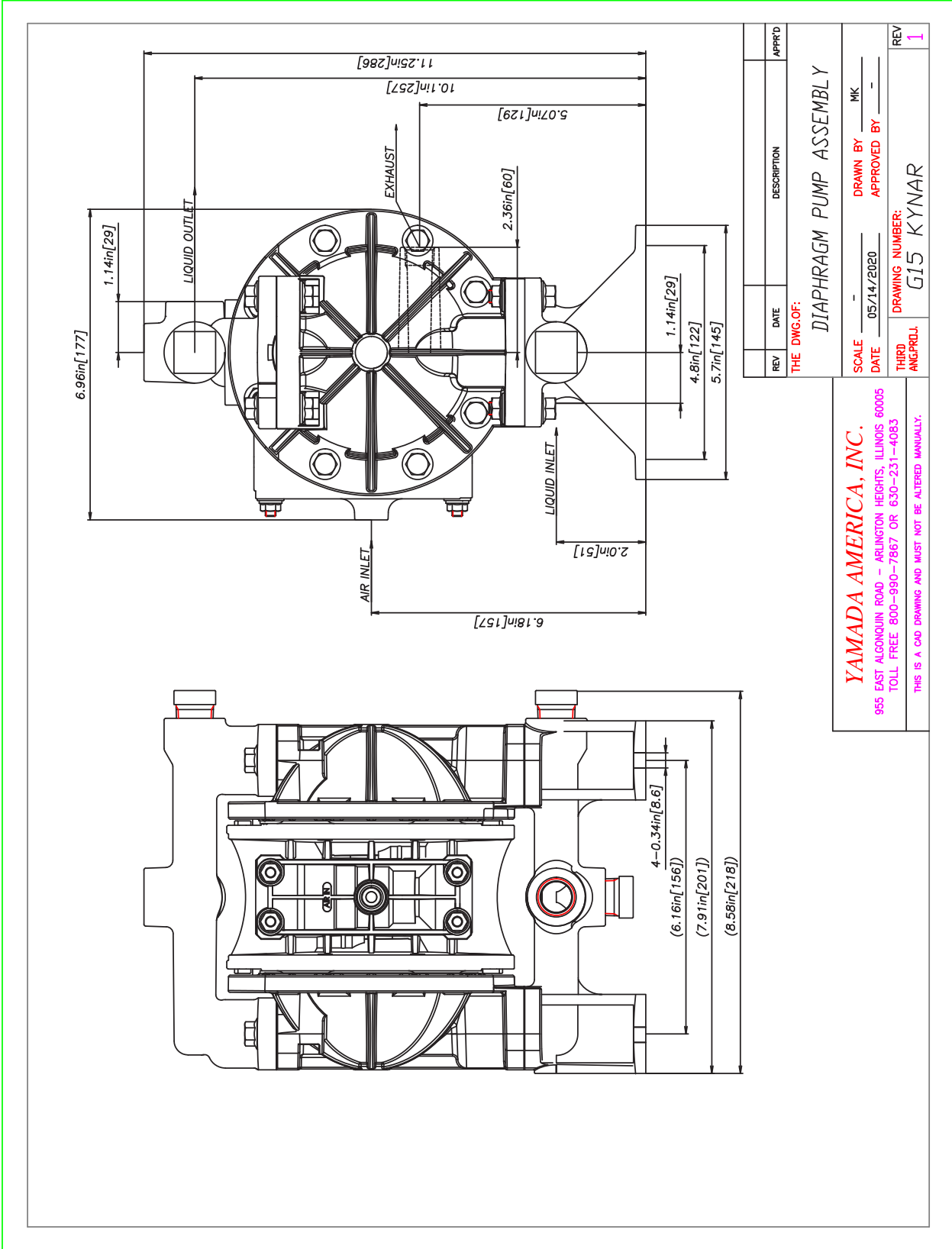
REV	DATE	DESCRIPTION	APPR'D
THE DWG. OF: YAMADA DIAPHRAGM PUMP			
SCALE: NTS		DRAWN BY: MK	
DATE: 01/25/19		APPROVED BY: -	
THIRD ANGLE		DRAWING NUMBER: G15S	REV: 1

YAMADA AMERICA, INC.
 955 EAST ALGONQUIN ROAD - ARLINGTON HEIGHTS, ILLINOIS 60005
 TOLL FREE 800-990-7867 OR 630-231-4083
 THIS IS A CAD DRAWING AND MUST NOT BE ALTERED MANUALLY.



REV	DATE	DESCRIPTION	APPROD
THE DWG OF:		DIAPHRAGM PUMP ASSEMBLY	
SCALE		DRAWN BY	MK
DATE	09/13/2018	APPROVED BY	
THIRD ANGRD.		DRAWING NUMBER:	G15P
REV			1

YAMADA AMERICA, INC.
 955 EAST ALGONQUIN ROAD - ARLINGTON HEIGHTS, ILLINOIS 60005
 TOLL FREE: 800-990-7867 OR 630-231-6083
 THIS IS A CAD DRAWING AND MUST NOT BE ALTERED MANUALLY.



REV	DATE	DESCRIPTION	APPR'D
THE DWG.OF:			
DIAPHRAGM PUMP ASSEMBLY			
SCALE	DATE	DRAWN BY	MK
	05/14/2020	APPROVED BY	
THIRD ANGLE PROJ.		DRAWING NUMBER:	G15 KYNAR
			REV 1

YAMADA AMERICA, INC.
 955 EAST ALGONQUIN ROAD - ARLINGTON HEIGHTS, ILLINOIS 60005
 TOLL FREE 800-990-7867 OR 630-231-4083
 THIS IS A CAD DRAWING AND MUST NOT BE ALTERED MANUALLY.

AutoCAD® is a registered trademark of Autodesk, Inc.

Hytrel® is a registered trademark of E.I. du Pont de Nemours and Company.

Kynar® is a registered trademark of Arkema.

Nordel™ is a trademark of DuPont Dow Elastomers.

Ryton® is a registered trademark of Chevron Phillips Chemical Company.

Santoprene® is a registered trademark of Advanced Elastomer Systems.

Viton® is a registered trademark of DuPont Performance Elastomers.

Swagelok™ & VCR™ are trademarks of the Swagelok Companies.

Flaretek® is a registered trademark of Entegris.

Garlock ONE-UP® is a registered trademark of W.L. Gore & Associates.

Yamada® is a registered trademark of Yamada America, Inc.

SolidPRO Designed to Pump Fluids Containing Solids® is a registered trademark of Yamada America, Inc.

Xtreme Duty Pro XDP® is a registered trademark of Yamada America, Inc.

The Proof's in the Pump® is a registered trademark of Yamada America, Inc.

The Proof is in the Pump® is a registered trademark of Yamada America, Inc.

Engineered to Perform. Designed to Outlast.® is a registered trademark of Yamada America, Inc.

Due to Yamada's continued commitment to product improvement, specifications may change without notice.